

**RUSH
WITT &
WILSON**



**3 Roundacres Way, Bexhill-On-Sea, East Sussex TN40 2QE
£318,000**

A beautifully presented three bedroom terrace house with garage, modern kitchen and bathroom, downstairs cloakroom , conservatory, private front and secluded rear garden, utility room, gas central heating system, double glazed windows and doors, viewing comes highly recommended by RWW sole agents. Council Tax Band C.



Entrance Hallway

With entrance door, parquet flooring, under stairs cloaks cupboard.

Cloakroom

WC with low level flush, pedestal mounted wash hand basin, half height wall tiling, obscured glass window to the front elevation, vanity unit.

Living/Dining Room

19'10" x 12'7" (6.07 x 3.85)

Window to the rear elevation overlooking the westerly facing rear garden, parquet flooring, two double radiators, open fireplace.

Conservatory

15'1" x 7'1" (4.60 x 2.18)

uPVC double glazed construction, two double radiators, patio doors lead out onto the westerly facing rear garden, tiled wood effect flooring.

Kitchen

11'6" x 9'10" (3.53 x 3.00)

Window to the front elevation, modern fitted kitchen comprising a range of base and wall units with wood block effect laminate worktops, stainless steel stainless steel sink unit with mixer tap, plumbing for washing machine, double radiator, breakfast bar, space for fridge/freezer and additional white goods, tiled splashbacks, gas hob with extractor canopy and light, integrated oven and grill.

Utility Room

6'4" x 4'5" (1.95 x 1.36)

Obscured glass windows to the side elevation, space for tumble dryer, laminate worktop, wall mounted gas central heating and domestic hot water boiler.

First Floor Landing

Access to the roof space.

Bedroom One

11'11" x 11'3" (3.64 x 3.45)

Window to the rear elevation, double radiator, built in wardrobe cupboard.

Bedroom Two

12'3" x 8'7" (3.75 x 2.64)

Window to the rear elevation, double radiator.

Bedroom Three

10'10" x 7'5" (3.31 x 2.28)

Window to the front elevation with far reaching views , double radiator, wardrobe recess.

Bathroom

Suite comprising double ended bath, electric shower unit, controls and showerhead, hand/shower attachment, folding screen, heated towel rail, built in airing cupboard with pre-lagged hot water cylinder, wc with concealed cistern, inset wash hand basin with vanity unit beneath, fully tiled walls, obscured glass window to the side elevation.

Outside**Front Garden**

Mainly laid to lawn with pathway to the front entrance, side access.

Rear Garden

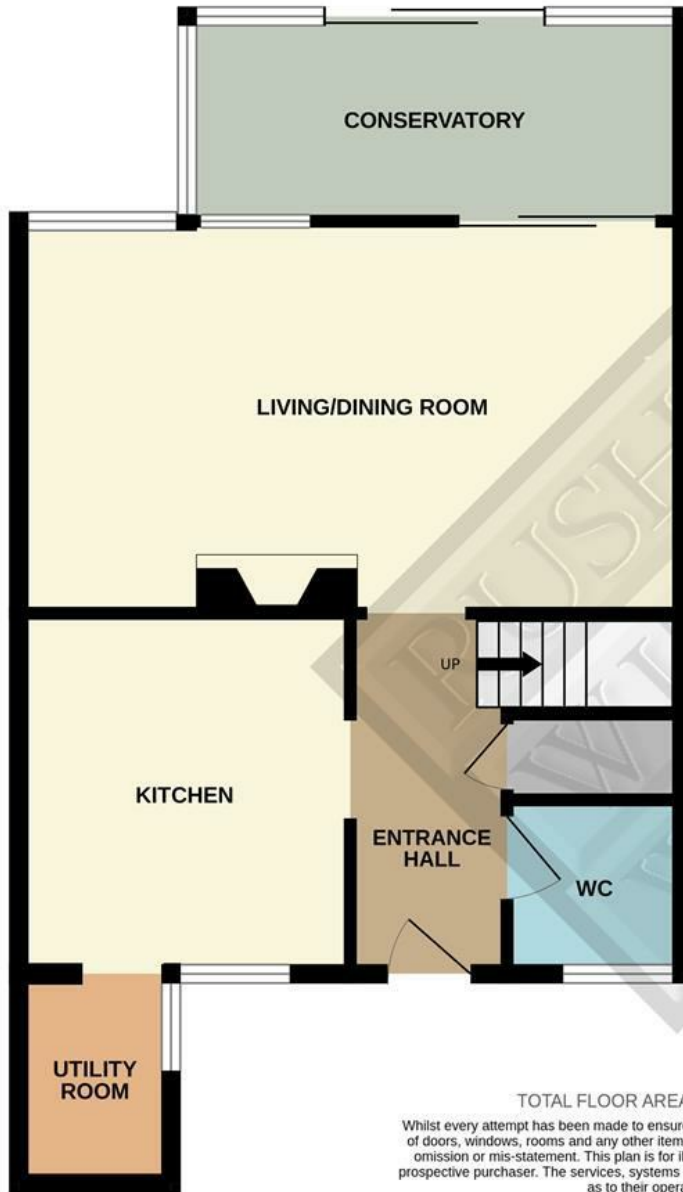
Westerly facing, patio area for alfresco dining, timber framed shed, gate to rear, all enclosed with fencing to all sides offering privacy and seclusion.

Garage Enbloc**Agents Note**

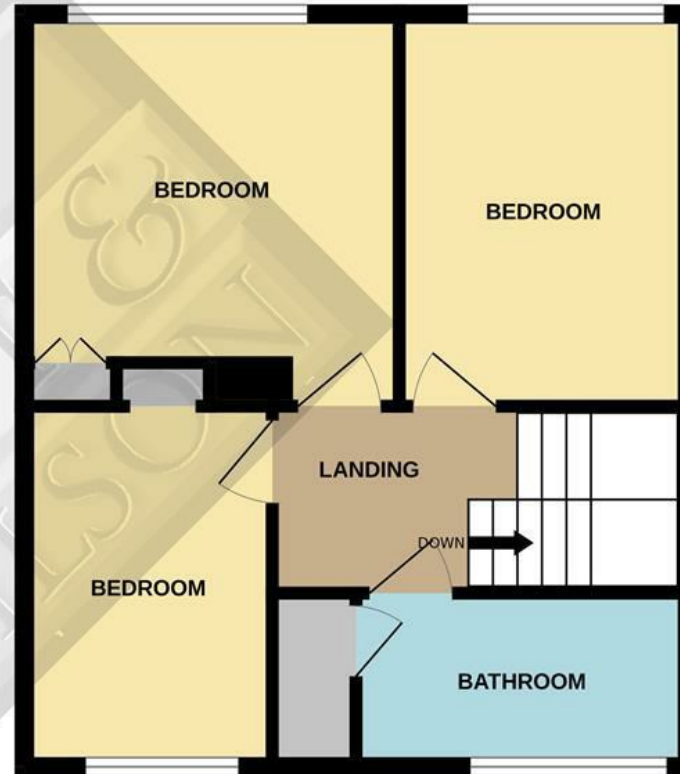
None of the services or appliances mentioned in these sale particulars have been tested. It should also be noted that measurements quoted are given for guidance only and are approximate and should not be relied upon for any other purpose.



GROUND FLOOR
569 sq.ft. (52.8 sq.m.) approx.

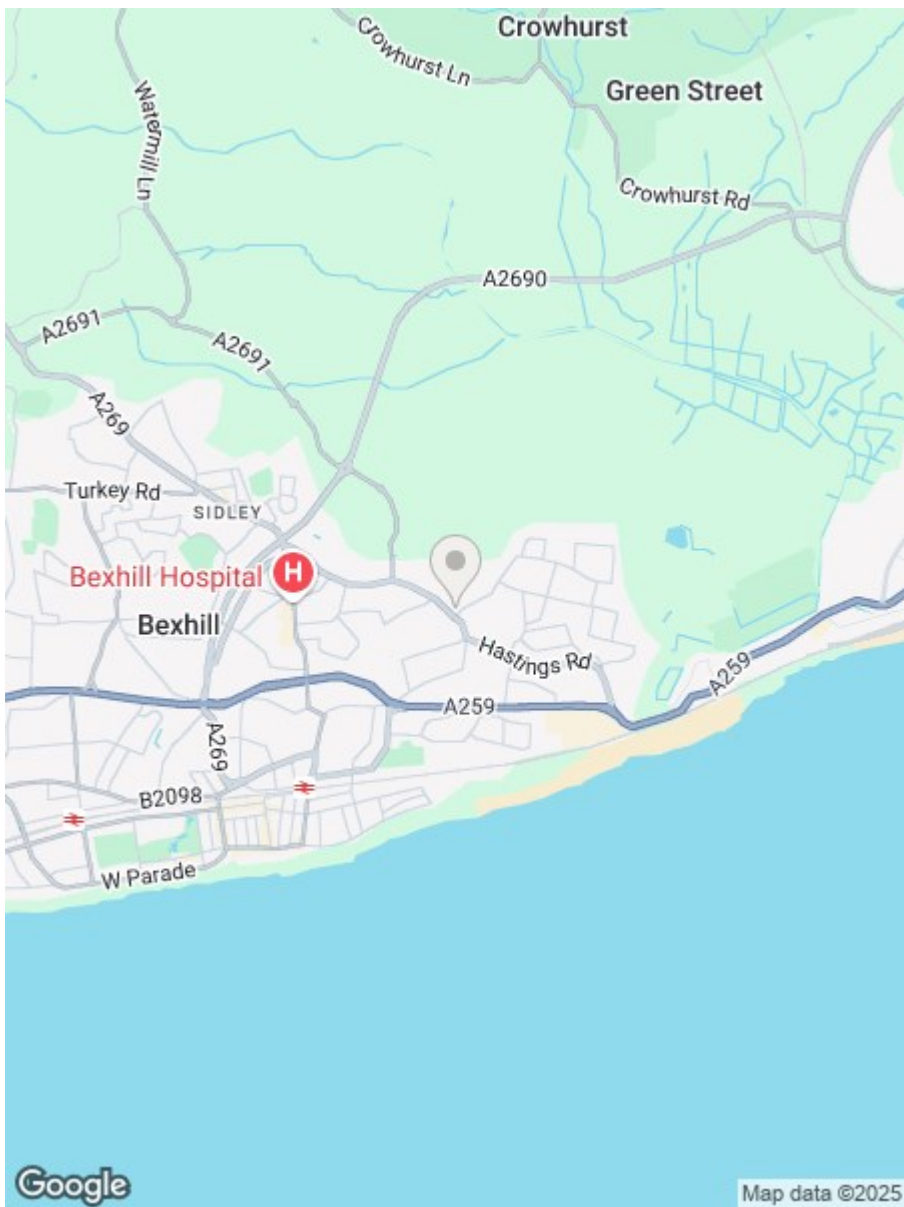


1ST FLOOR
452 sq.ft. (42.0 sq.m.) approx.



TOTAL FLOOR AREA : 1021 sq.ft. (94.8 sq.m.) approx.

Whilst every attempt has been made to ensure the accuracy of the floorplan contained here, measurements of doors, windows, rooms and any other items are approximate and no responsibility is taken for any error, omission or mis-statement. This plan is for illustrative purposes only and should be used as such by any prospective purchaser. The services, systems and appliances shown have not been tested and no guarantee as to their operability or efficiency can be given.
Made with Metropix ©2025



Energy Efficiency Rating		
	Current	Potential
<i>Very energy efficient - lower running costs</i>		
(92 plus) A		<div style="border: 1px solid black; padding: 2px; display: inline-block;">85</div> <div style="border: 1px solid black; padding: 2px; display: inline-block; margin-top: 10px;">70</div>
(81-91) B		
(69-80) C		
(55-68) D		
(39-54) E		
(21-38) F		
(1-20) G		
<i>Not energy efficient - higher running costs</i>		
England & Wales	EU Directive 2002/91/EC	

Environmental Impact (CO ₂) Rating		
	Current	Potential
<i>Very environmentally friendly - lower CO₂ emissions</i>		
(92 plus) A		
(81-91) B		
(69-80) C		
(55-68) D		
(39-54) E		
(21-38) F		
(1-20) G		
<i>Not environmentally friendly - higher CO₂ emissions</i>		
England & Wales	EU Directive 2002/91/EC	

**RUSH
WITT &
WILSON**

**Residential Estate Agents
Lettings & Property Management**



**3 Devonshire Road
Bexhill-on-Sea
East Sussex
TN40 1AH
Tel: 01424 225588
bexhill@rushwittwilson.co.uk
www.rushwittwilson.co.uk**